

Cooper Lighting Solutions Photometric Lab
1121 Highway 74 South
Peachtree City, GA 30269

Scaled data based on original data using
LM-79-2024 Approved Method: Electrical and Photometric Measurements of Solid-
State Lighting Products

Test Report Prepared for
Cooper Lighting Solutions

Brand: INVUE

Report Number: P869149

Luminaire Tested: EMM2-HSN-SA2C-722-U-5WQ

Issue Date: 08/22/2024

Test Information

Test Method: LM-79-2024
Report Number: P869149
Test Lab: INNOVATION CENTER(G3)
Issue Date: 5/19/2026
Manufacturer: COOPER LIGHTING SOLUTIONS
Product Line: INVUE
Catalog Number: EMM2-HSN-SA2C-722-U-5WQ
Description: EPIC MODERN SHORT HOUSING DISCRETE LED ARRAYS 120W 70CRI 2200K FIXTURE w/
TYPE V SQUARE WIDE DISTRIBUTION OPTIC
Light Source: (20) 2200K CCT, 70 CRI LEDS
Ballast/Driver: -

Summary

Lumens per Lamp: N/A
Luminaire Lumens: 12223.1 lumens
Efficiency: N/A
Efficacy: 121.0 lumens/watt
Luminous Opening: Rectangular (W 0.67' x L: 0.33' x H: 0')
IES Classification: Type V - Short
BUG Rating: B4 - U0 - G2

Input Watts (W): 101
Input Voltage (V): 120
Input Current (Ain): NR
Voltage Rise (V): NR
Power Factor: 0.99
Total Harmonic Distortion (THDi): 9.45%
Frequency (hertz): 60
Stabilization Time: NR
Operation Time: NR
Ambient Temperature (°C): NR
Test Distance: 28.75 FT

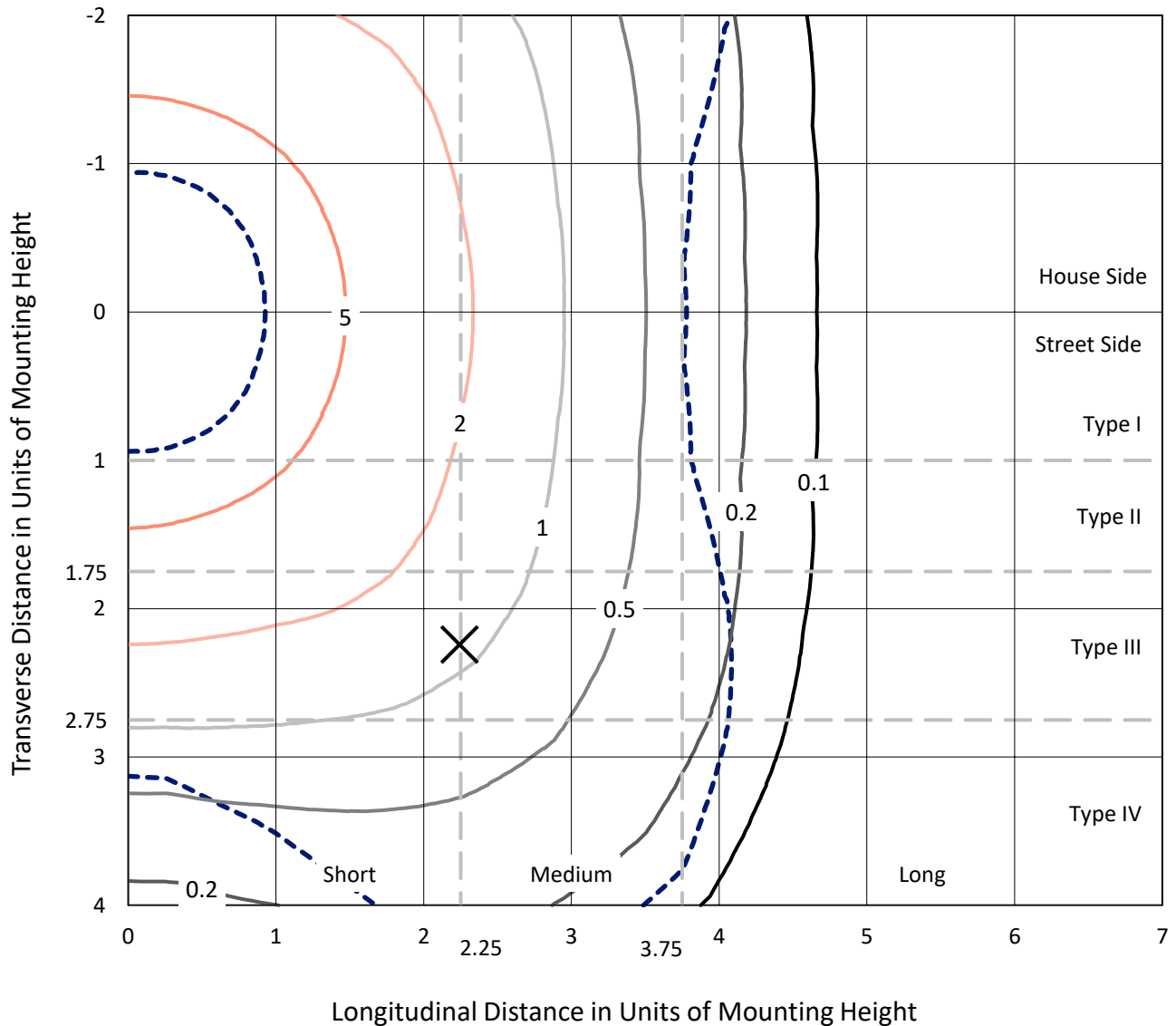


REPORT NUMBER: P869149

CATALOG NUMBER: EMM2-HSN-SA2C-722-U-5WQ

Iso-Footcandle Lines of Horizontal Illumination

× Max cd
 - - - 1/2 Max cd

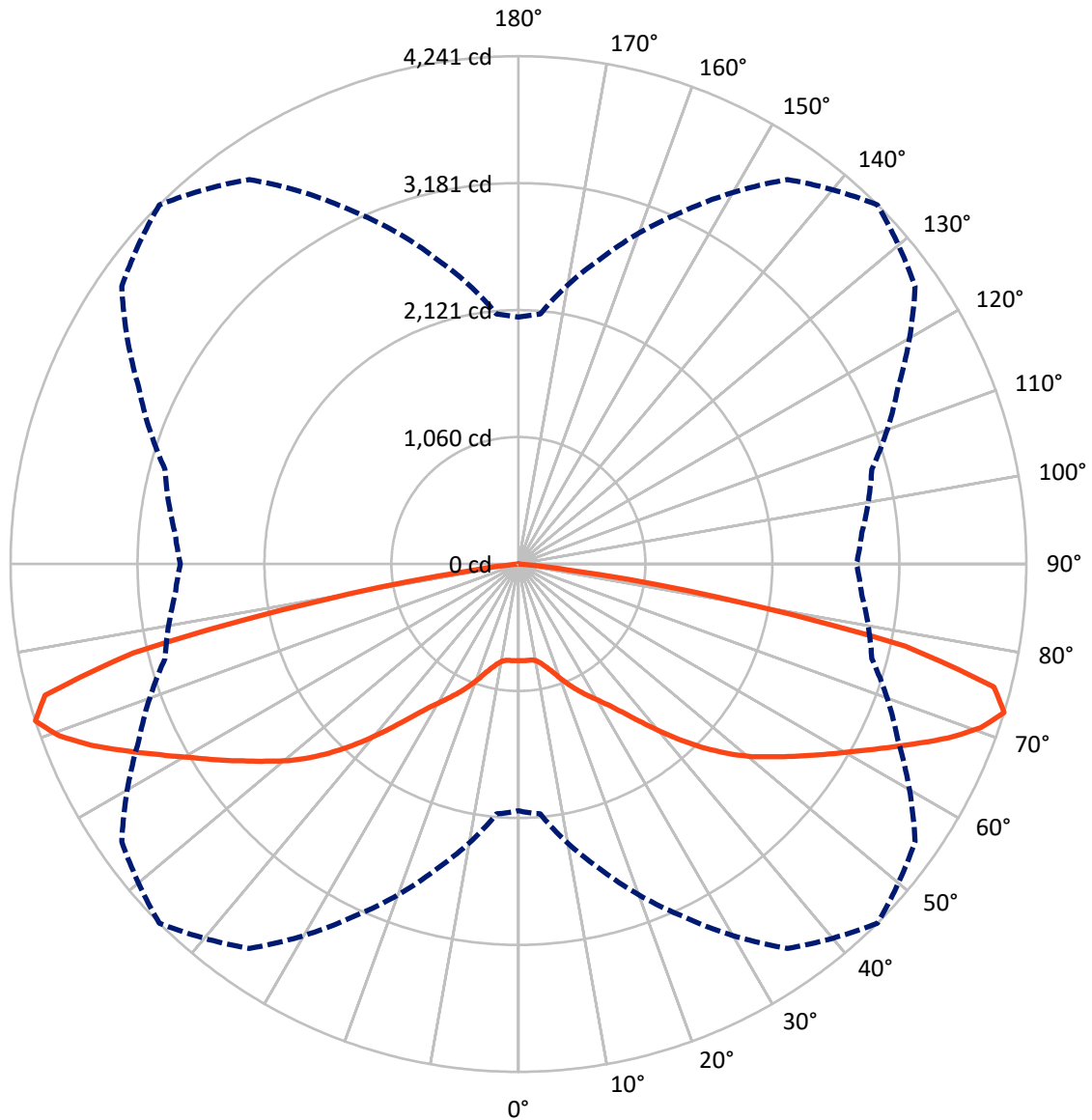


Based on 10 foot mounting height. Maximum calculated value = 8.7 fc
 Type V - Short - N/A

REPORT NUMBER: P869149

CATALOG NUMBER: EMM2-HSN-SA2C-722-U-5WQ

Luminous Intensity Polar Plot



— Vertical Plane Through 45-Deg Lateral - - - Horizontal Cone Through 72.5-Deg Vertical

REPORT NUMBER: P869149

CATALOG NUMBER: EMM2-HSN-SA2C-722-U-5WQ

FLUX DISTRIBUTION:

| | | Downward | Upward | Total |
|--------------------|-----------|----------|--------|---------|
| House Side | Lumens | 6111.6 | 0.0 | 6111.6 |
| | % Fixture | 50.0 | 0.0 | 50.0 |
| Street Side | Lumens | 6111.6 | 0.0 | 6111.6 |
| | % Fixture | 50.0 | 0.0 | 50.0 |
| Total | Lumens | 12223.1 | 0.0 | 12223.1 |
| | % Fixture | 100.0 | 0.0 | 100.0 |

Coefficient of Utilization

ZONAL LUMENS:

| Zone | Lumens | % Fixture |
|-----------|---------|-----------|
| 0°-10° | 77.3 | 0.6 |
| 10°-20° | 258.1 | 2.1 |
| 20°-30° | 532.6 | 4.4 |
| 30°-40° | 980.4 | 8.0 |
| 40°-50° | 1723.9 | 14.1 |
| 50°-60° | 2500.2 | 20.5 |
| 60°-70° | 3259.3 | 26.7 |
| 70°-80° | 2709.3 | 22.2 |
| 80°-90° | 181.9 | 1.5 |
| 90°-100° | 0.0 | 0.0 |
| 100°-110° | 0.0 | 0.0 |
| 110°-120° | 0.0 | 0.0 |
| 120°-130° | 0.0 | 0.0 |
| 130°-140° | 0.0 | 0.0 |
| 140°-150° | 0.0 | 0.0 |
| 150°-160° | 0.0 | 0.0 |
| 160°-170° | 0.0 | 0.0 |
| 170°-180° | 0.0 | 0.0 |
| 0°-90° | 12223.1 | 100.0 |
| 0°-180° | 12223.1 | 100.0 |



REPORT NUMBER: P869149

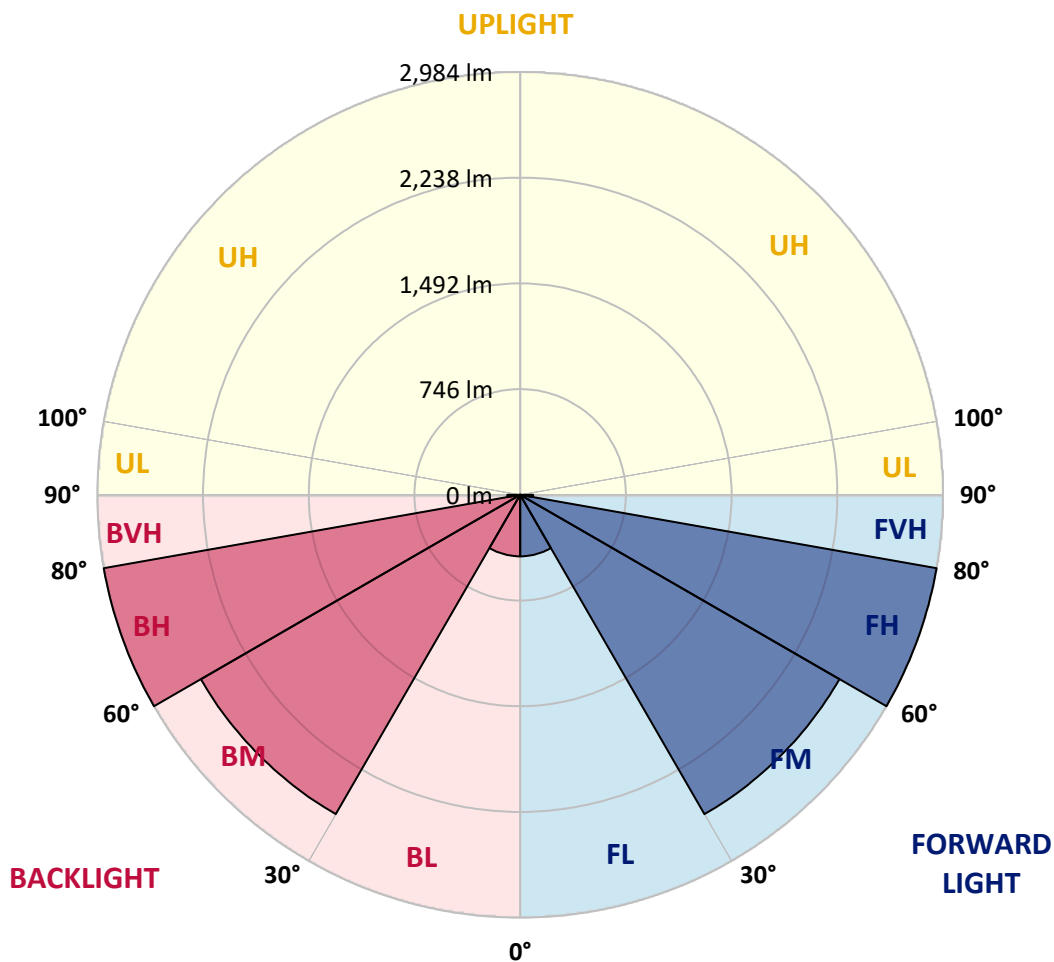
CATALOG NUMBER: EMM2-HSN-SA2C-722-U-5WQ

LUMINAIRE CLASSIFICATION SYSTEM LUMEN TABLE AND BUG RATING:

| Zone | | Lumens | % Fixture | Zone Rating/Lumen Limit | | |
|------|-------------|--------|-----------|-------------------------|------|---------|
| | | | | B | U | G |
| FL | (0°-30°) | 434.0 | 3.6 | | | |
| FM | (30°-60°) | 2602.3 | 21.3 | | | |
| FH | (60°-80°) | 2984.3 | 24.4 | | | G2/5000 |
| FVH | (80°-90°) | 91.0 | 0.7 | | | G1/100 |
| BL | (0°-30°) | 434.0 | 3.6 | B1/500 | | |
| BM | (30°-60°) | 2602.3 | 21.3 | B3/5000 | | |
| BH | (60°-80°) | 2984.3 | 24.4 | B4/5000 | | G2/5000 |
| BVH | (80°-90°) | 91.0 | 0.7 | | | G1/100 |
| UL | (90°-100°) | 0.0 | 0.0 | | U0/0 | |
| UH | (100°-180°) | 0.0 | 0.0 | | U0/0 | |

BUG Rating: B4-U0-G2

Type V Short





REPORT NUMBER: P869149

CATALOG NUMBER: EMM2-HSN-SA2C-722-U-5WQ

CANDELA DISTRIBUTION (FULL):

| | 0° | 5° | 15° | 25° | 35° | 45° | 55° | 65° | 75° | 85° | 90° |
|-------|--------|--------|--------|--------|--------|--------|--------|--------|--------|--------|--------|
| 0° | 806.9 | 806.9 | 806.9 | 806.9 | 806.9 | 806.9 | 806.9 | 806.9 | 806.9 | 806.9 | 806.9 |
| 2.5° | 804.4 | 805.7 | 805.7 | 805.7 | 806.9 | 808.2 | 809.5 | 810.7 | 813.3 | 814.5 | 814.5 |
| 5° | 808.2 | 806.9 | 805.7 | 808.2 | 808.2 | 808.2 | 809.5 | 810.7 | 810.7 | 810.7 | 812.0 |
| 7.5° | 804.4 | 805.7 | 804.4 | 804.4 | 808.2 | 809.5 | 808.2 | 806.9 | 806.9 | 808.2 | 808.2 |
| 10° | 818.3 | 817.1 | 815.8 | 815.8 | 819.6 | 820.9 | 819.6 | 818.3 | 818.3 | 820.9 | 820.9 |
| 12.5° | 850.0 | 852.5 | 844.9 | 844.9 | 850.0 | 852.5 | 848.7 | 847.5 | 848.7 | 851.3 | 851.3 |
| 15° | 899.4 | 898.1 | 893.1 | 888.0 | 893.1 | 896.9 | 891.8 | 889.3 | 890.5 | 896.9 | 891.8 |
| 17.5° | 953.9 | 955.2 | 950.1 | 945.0 | 948.8 | 953.9 | 946.3 | 939.9 | 941.2 | 943.7 | 941.2 |
| 20° | 1014.7 | 1013.4 | 1012.2 | 1012.2 | 1019.8 | 1026.1 | 1014.7 | 999.5 | 995.7 | 993.2 | 993.2 |
| 22.5° | 1059.0 | 1062.8 | 1064.1 | 1075.5 | 1093.2 | 1099.6 | 1084.4 | 1064.1 | 1048.9 | 1041.3 | 1036.2 |
| 25° | 1128.7 | 1124.9 | 1122.4 | 1135.0 | 1161.6 | 1173.0 | 1154.0 | 1126.2 | 1111.0 | 1109.7 | 1113.5 |
| 27.5° | 1192.0 | 1192.0 | 1197.1 | 1209.8 | 1235.1 | 1246.5 | 1230.0 | 1202.2 | 1194.6 | 1194.6 | 1190.8 |
| 30° | 1274.4 | 1270.6 | 1275.6 | 1297.2 | 1316.2 | 1323.8 | 1309.8 | 1290.8 | 1284.5 | 1284.5 | 1278.2 |
| 32.5° | 1370.7 | 1371.9 | 1379.5 | 1393.5 | 1412.5 | 1413.7 | 1408.7 | 1399.8 | 1396.0 | 1392.2 | 1398.5 |
| 35° | 1517.6 | 1517.6 | 1515.1 | 1525.2 | 1530.3 | 1532.8 | 1535.3 | 1531.5 | 1531.5 | 1531.5 | 1526.5 |
| 37.5° | 1700.0 | 1689.9 | 1688.6 | 1679.7 | 1673.4 | 1679.7 | 1691.1 | 1703.8 | 1714.0 | 1707.6 | 1705.1 |
| 40° | 1881.2 | 1876.1 | 1860.9 | 1847.0 | 1841.9 | 1844.4 | 1858.4 | 1885.0 | 1896.4 | 1896.4 | 1906.5 |
| 42.5° | 2076.2 | 2066.1 | 2047.1 | 2030.6 | 2016.7 | 2020.5 | 2033.2 | 2066.1 | 2091.5 | 2102.9 | 2097.8 |
| 45° | 2251.1 | 2242.2 | 2223.2 | 2208.0 | 2197.9 | 2196.6 | 2213.1 | 2234.6 | 2268.8 | 2278.9 | 2286.5 |
| 47.5° | 2400.5 | 2394.2 | 2377.7 | 2362.5 | 2366.3 | 2367.6 | 2372.7 | 2391.7 | 2419.5 | 2433.5 | 2432.2 |
| 50° | 2522.2 | 2517.1 | 2501.9 | 2508.2 | 2518.4 | 2528.5 | 2522.2 | 2534.8 | 2552.6 | 2558.9 | 2564.0 |
| 52.5° | 2633.6 | 2626.0 | 2615.9 | 2627.3 | 2653.9 | 2674.2 | 2678.0 | 2669.1 | 2674.2 | 2678.0 | 2674.2 |
| 55° | 2743.8 | 2735.0 | 2732.4 | 2752.7 | 2793.2 | 2831.2 | 2827.4 | 2802.1 | 2795.8 | 2788.2 | 2784.4 |
| 57.5° | 2833.8 | 2827.4 | 2837.6 | 2871.8 | 2950.3 | 3001.0 | 2984.5 | 2926.3 | 2900.9 | 2883.2 | 2878.1 |
| 60° | 2890.8 | 2889.5 | 2912.3 | 2992.1 | 3111.2 | 3182.1 | 3155.5 | 3055.5 | 2998.5 | 2982.0 | 2974.4 |
| 62.5° | 2921.2 | 2922.5 | 2963.0 | 3104.9 | 3294.9 | 3391.2 | 3344.3 | 3191.0 | 3102.3 | 3085.9 | 3088.4 |
| 65° | 2949.1 | 2945.3 | 2998.5 | 3199.9 | 3493.8 | 3624.3 | 3560.9 | 3354.4 | 3225.2 | 3192.3 | 3192.3 |
| 67.5° | 2969.3 | 2973.1 | 3052.9 | 3294.9 | 3687.6 | 3873.8 | 3781.3 | 3528.0 | 3357.0 | 3307.6 | 3301.2 |
| 70° | 2713.4 | 2750.2 | 2999.7 | 3358.2 | 3840.9 | 4094.2 | 3972.6 | 3634.4 | 3362.0 | 3221.4 | 3207.5 |
| 72.5° | 2061.0 | 2095.3 | 2634.9 | 3245.5 | 3919.4 | 4241.2 | 4043.6 | 3498.8 | 3055.5 | 2876.9 | 2823.6 |
| 75° | 1359.3 | 1383.3 | 1963.5 | 2835.0 | 3701.5 | 4101.8 | 3682.5 | 3013.7 | 2405.6 | 2173.8 | 2187.7 |
| 77.5° | 605.5 | 682.8 | 1251.6 | 2211.8 | 3049.1 | 3301.2 | 2808.4 | 2056.0 | 1469.5 | 1244.0 | 1219.9 |
| 80° | 253.4 | 277.4 | 472.5 | 1179.4 | 1767.2 | 1691.1 | 1195.8 | 689.1 | 438.3 | 340.8 | 329.4 |
| 82.5° | 73.5 | 76.0 | 93.7 | 204.0 | 359.8 | 423.1 | 254.6 | 129.2 | 122.9 | 97.5 | 89.9 |
| 85° | 5.1 | 5.1 | 7.6 | 12.7 | 17.7 | 29.1 | 32.9 | 38.0 | 43.1 | 36.7 | 36.7 |
| 87.5° | 2.5 | 2.5 | 2.5 | 3.8 | 3.8 | 5.1 | 3.8 | 3.8 | 3.8 | 3.8 | 3.8 |
| 90° | 0.0 | 0.0 | 0.0 | 0.0 | 0.0 | 0.0 | 0.0 | 0.0 | 0.0 | 0.0 | 0.0 |

Signify Classified - Internal
Cooper Lighting Solutions Photometric Lab
1121 Highway 74 South
Peachtree City, GA 30269



Test Information

Test Method: LM-79-2008 Report
 Number: SP1-1908-441-10-R4
 Test Lab: COOPER LIGHTING SOLUTIONS
 Photometer: SP1 - 76IN SPHERE
 Measurement Geometry: 4π
 Issue Date: 10/28/2024
 Manufacturer: COOPER LIGHTING SOLUTIONS
 Product Line: McGRAW-EDISON
 Catalog Number: **SA1C-722-U-5WQ**
 Description: McGRAW EDISON ROADWAY AND AREA LUMINAIRE

THIS IS A REVISION OF SP1-1908-441-4-R3. TO UPDATE THE CATALOG INFORMATION.TESTED IN SITU. ROADWAY AND AREA LUMINAIRE. (1) 70 CRI, 5000K, 1050MA LIGHTSQUARE WITH 16 LEDS AND TYPE V WIDE OPTICS.

Spectral Parameters

CCT (K): 2237
 CIE u': 0.2876
 CIE v': 0.5346
 Duv: -0.0006
 CIE x: 0.5005
 CIE y: 0.4134
 CIE z: 0.0860
 Peak Wavelength (nm): 603
 Dominant Wavelength (nm): 587
 Purity: 74.5
 Rf: 69.8
 Rg: 99.2

| | | | |
|-----------|------|------|-------|
| CRI (Ra): | 72.0 | | |
| R1: | 68.9 | R9: | -17.4 |
| R2: | 83.0 | R10: | 61.3 |
| R3: | 95.2 | R11: | 59.8 |
| R4: | 66.2 | R12: | 50.5 |
| R5: | 65.9 | R13: | 71.1 |
| R6: | 76.3 | R14: | 96.9 |
| R7: | 76.7 | | |
| R8: | 43.8 | | |



Test Conditions

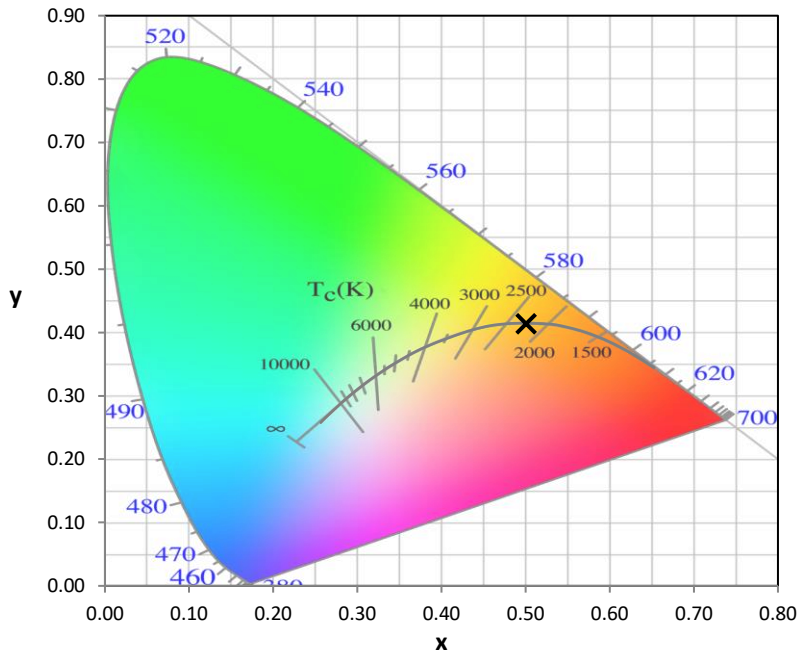
Stabilization Time: 71M
 Operation Time: 12H
 Room Temperature (°C) / RH%: 24.7/41%
 Sphere Temperature (°C): 25.6

REPORT NUMBER: SP1-1908-441-10-R4

| Measurement and Test Equipment | | | |
|--------------------------------|-----------------------|------------------|----------------------|
| Instrument | Identification Number | Calibration Date | Calibration Due Date |
| Photometer | IN0058 | 6/28/2019 | 12/28/2019 |
| Power Meter | IN0071 | 12/5/2018 | 12/5/2019 |
| AC Power Source | IN0063 | 12/5/2018 | 12/5/2019 |
| DC Power Source | IN0208 | 12/5/2018 | 12/5/2019 |
| Sphere Thermometer | IN0085 | 12/5/2018 | 12/5/2019 |
| Room Thermometer | IN0046 | 12/5/2018 | 12/5/2019 |

REPORT NUMBER: SP1-1908-441-10-R4

CIE 1931 Chromaticity Diagram



CIE 1931 Chromaticity Diagram with 2017 ANSI 7-Step and 4-Step Quadrangles



Point lies inside the ANSI 2200K 4-step quadrangle

REPORT NUMBER: SP1-1908-441-10-R4

Photopic Flux vs. Wavelength



Photopic Lumens: 5530.5

| λ (nm) | Power ($\mu\text{W}/\text{nm}$) | Lumens (ϕ/nm) | λ (nm) | Power ($\mu\text{W}/\text{nm}$) | Lumens (ϕ/nm) | λ (nm) | Power ($\mu\text{W}/\text{nm}$) | Lumens (ϕ/nm) | λ (nm) | Power ($\mu\text{W}/\text{nm}$) | Lumens (ϕ/nm) | λ (nm) | Power ($\mu\text{W}/\text{nm}$) | Lumens (ϕ/nm) |
|----------------|-----------------------------------|-----------------------------|----------------|-----------------------------------|-----------------------------|----------------|-----------------------------------|-----------------------------|----------------|-----------------------------------|-----------------------------|----------------|-----------------------------------|-----------------------------|
| 360 | 1768 | 0.0 | 490 | 5206 | 0.7 | 620 | 130919 | 34.1 | 750 | 8553 | 0.0 | 880 | 2713 | 0.0 |
| 365 | 1569 | 0.0 | 495 | 7286 | 1.3 | 625 | 125335 | 27.7 | 755 | 7696 | 0.0 | 885 | 2316 | 0.0 |
| 370 | 1594 | 0.0 | 500 | 10654 | 2.4 | 630 | 118388 | 21.4 | 760 | 6978 | 0.0 | 890 | 2539 | 0.0 |
| 375 | 1744 | 0.0 | 505 | 15189 | 4.2 | 635 | 111855 | 16.8 | 765 | 6377 | 0.0 | 895 | 1933 | 0.0 |
| 380 | 1659 | 0.0 | 510 | 20541 | 7.1 | 640 | 104062 | 12.4 | 770 | 5600 | 0.0 | 900 | 2216 | 0.0 |
| 385 | 1504 | 0.0 | 515 | 26492 | 11.0 | 645 | 96365 | 9.3 | 775 | 5000 | 0.0 | 905 | 2067 | 0.0 |
| 390 | 1541 | 0.0 | 520 | 32294 | 15.7 | 650 | 88651 | 6.5 | 780 | 4709 | 0.0 | 910 | 1959 | 0.0 |
| 395 | 1355 | 0.0 | 525 | 38123 | 20.5 | 655 | 81152 | 4.7 | 785 | 4305 | 0.0 | 915 | 1874 | 0.0 |
| 400 | 1243 | 0.0 | 530 | 43232 | 25.5 | 660 | 73523 | 3.1 | 790 | 4040 | 0.0 | 920 | 1484 | 0.0 |
| 405 | 1417 | 0.0 | 535 | 48012 | 29.8 | 665 | 66123 | 2.1 | 795 | 3642 | 0.0 | 925 | 1914 | 0.0 |
| 410 | 2147 | 0.0 | 540 | 52623 | 34.3 | 670 | 58677 | 1.3 | 800 | 3594 | 0.0 | 930 | 1948 | 0.0 |
| 415 | 3837 | 0.0 | 545 | 57516 | 38.3 | 675 | 52349 | 0.9 | 805 | 3190 | 0.0 | 935 | 2079 | 0.0 |
| 420 | 7159 | 0.0 | 550 | 62613 | 42.5 | 680 | 46159 | 0.5 | 810 | 3241 | 0.0 | 940 | 2263 | 0.0 |
| 425 | 12599 | 0.1 | 555 | 68554 | 46.8 | 685 | 40525 | 0.3 | 815 | 2732 | 0.0 | 945 | 1688 | 0.0 |
| 430 | 19019 | 0.2 | 560 | 75325 | 51.2 | 690 | 35615 | 0.2 | 820 | 2612 | 0.0 | 950 | 1560 | 0.0 |
| 435 | 24875 | 0.3 | 565 | 82533 | 54.9 | 695 | 31158 | 0.1 | 825 | 2966 | 0.0 | 955 | 2826 | 0.0 |
| 440 | 29103 | 0.5 | 570 | 90909 | 59.1 | 700 | 27409 | 0.1 | 830 | 2574 | 0.0 | 960 | 1477 | 0.0 |
| 445 | 29901 | 0.6 | 575 | 99621 | 62.0 | 705 | 24204 | 0.1 | 835 | 2633 | 0.0 | 965 | 1568 | 0.0 |
| 450 | 24862 | 0.6 | 580 | 108484 | 64.5 | 710 | 21558 | 0.0 | 840 | 2526 | 0.0 | 970 | 2030 | 0.0 |
| 455 | 15942 | 0.5 | 585 | 116679 | 64.8 | 715 | 19222 | 0.0 | 845 | 2631 | 0.0 | 975 | 1986 | 0.0 |
| 460 | 9916 | 0.4 | 590 | 123752 | 64.0 | 720 | 17310 | 0.0 | 850 | 2079 | 0.0 | 980 | 2540 | 0.0 |
| 465 | 7051 | 0.4 | 595 | 129324 | 61.3 | 725 | 15280 | 0.0 | 855 | 2309 | 0.0 | 985 | 1139 | 0.0 |
| 470 | 5227 | 0.3 | 600 | 134082 | 57.8 | 730 | 13282 | 0.0 | 860 | 2528 | 0.0 | 990 | 2018 | 0.0 |
| 475 | 4257 | 0.3 | 605 | 135698 | 52.6 | 735 | 11753 | 0.0 | 865 | 2121 | 0.0 | 995 | 3445 | 0.0 |
| 480 | 4052 | 0.4 | 610 | 135144 | 46.4 | 740 | 10654 | 0.0 | 870 | 2751 | 0.0 | 1000 | 3704 | 0.0 |
| 485 | 4298 | 0.5 | 615 | 134180 | 40.5 | 745 | 9451 | 0.0 | 875 | 2317 | 0.0 | | | |

REPORT NUMBER: SP1-1908-441-10-R4

Scotopic Flux vs. Wavelength



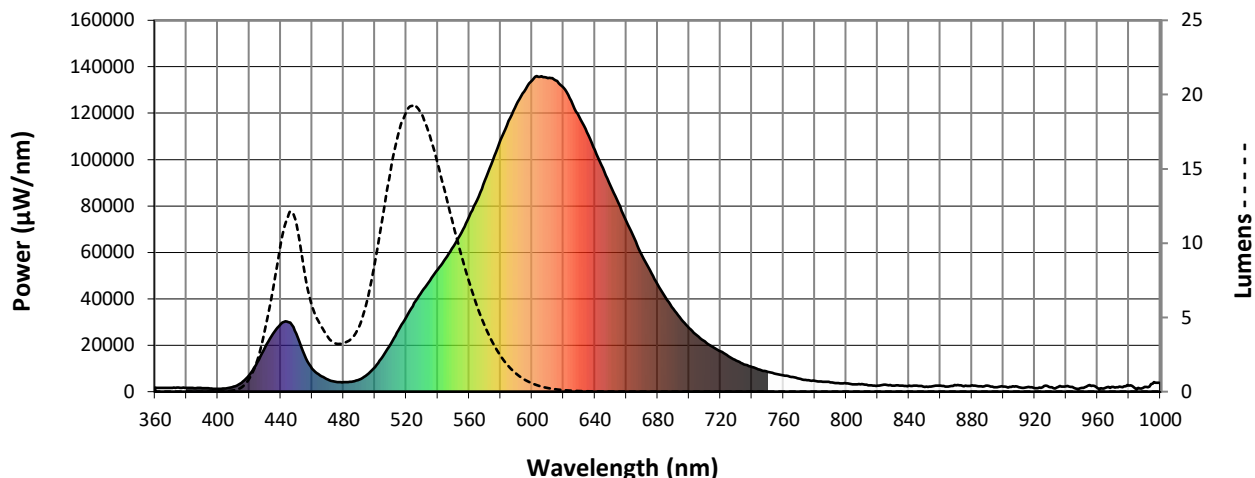
Scotopic Lumens: 4696.9

S/P: 0.85

| λ (nm) | Power (µW/nm) | Lumens (φ/nm) | λ (nm) | Power (µW/nm) | Lumens (φ/nm) | λ (nm) | Power (µW/nm) | Lumens (φ/nm) | λ (nm) | Power (µW/nm) | Lumens (φ/nm) | λ (nm) | Power (µW/nm) | Lumens (φ/nm) |
|--------|---------------|---------------|--------|---------------|---------------|--------|---------------|---------------|--------|---------------|---------------|--------|---------------|---------------|
| 360 | 1768 | 0.0 | 490 | 5206 | 4.3 | 620 | 130919 | 0.1 | 750 | 8553 | 0.0 | 880 | 2713 | 0.0 |
| 365 | 1569 | 0.0 | 495 | 7286 | 6.0 | 625 | 125335 | 0.1 | 755 | 7696 | 0.0 | 885 | 2316 | 0.0 |
| 370 | 1594 | 0.0 | 500 | 10654 | 8.6 | 630 | 118388 | 0.0 | 760 | 6978 | 0.0 | 890 | 2539 | 0.0 |
| 375 | 1744 | 0.0 | 505 | 15189 | 11.7 | 635 | 111855 | 0.0 | 765 | 6377 | 0.0 | 895 | 1933 | 0.0 |
| 380 | 1659 | 0.0 | 510 | 20541 | 14.7 | 640 | 104062 | 0.0 | 770 | 5600 | 0.0 | 900 | 2216 | 0.0 |
| 385 | 1504 | 0.0 | 515 | 26492 | 17.3 | 645 | 96365 | 0.0 | 775 | 5000 | 0.0 | 905 | 2067 | 0.0 |
| 390 | 1541 | 0.0 | 520 | 32294 | 18.8 | 650 | 88651 | 0.0 | 780 | 4709 | 0.0 | 910 | 1959 | 0.0 |
| 395 | 1355 | 0.0 | 525 | 38123 | 19.3 | 655 | 81152 | 0.0 | 785 | 4305 | 0.0 | 915 | 1874 | 0.0 |
| 400 | 1243 | 0.0 | 530 | 43232 | 18.7 | 660 | 73523 | 0.0 | 790 | 4040 | 0.0 | 920 | 1484 | 0.0 |
| 405 | 1417 | 0.0 | 535 | 48012 | 17.3 | 665 | 66123 | 0.0 | 795 | 3642 | 0.0 | 925 | 1914 | 0.0 |
| 410 | 2147 | 0.1 | 540 | 52623 | 15.4 | 670 | 58677 | 0.0 | 800 | 3594 | 0.0 | 930 | 1948 | 0.0 |
| 415 | 3837 | 0.3 | 545 | 57516 | 13.4 | 675 | 52349 | 0.0 | 805 | 3190 | 0.0 | 935 | 2079 | 0.0 |
| 420 | 7159 | 0.8 | 550 | 62613 | 11.2 | 680 | 46159 | 0.0 | 810 | 3241 | 0.0 | 940 | 2263 | 0.0 |
| 425 | 12599 | 2.0 | 555 | 68554 | 9.2 | 685 | 40525 | 0.0 | 815 | 2732 | 0.0 | 945 | 1688 | 0.0 |
| 430 | 19019 | 4.0 | 560 | 75325 | 7.4 | 690 | 35615 | 0.0 | 820 | 2612 | 0.0 | 950 | 1560 | 0.0 |
| 435 | 24875 | 6.6 | 565 | 82533 | 5.8 | 695 | 31158 | 0.0 | 825 | 2966 | 0.0 | 955 | 2826 | 0.0 |
| 440 | 29103 | 9.7 | 570 | 90909 | 4.4 | 700 | 27409 | 0.0 | 830 | 2574 | 0.0 | 960 | 1477 | 0.0 |
| 445 | 29901 | 11.8 | 575 | 99621 | 3.3 | 705 | 24204 | 0.0 | 835 | 2633 | 0.0 | 965 | 1568 | 0.0 |
| 450 | 24862 | 11.5 | 580 | 108484 | 2.4 | 710 | 21558 | 0.0 | 840 | 2526 | 0.0 | 970 | 2030 | 0.0 |
| 455 | 15942 | 8.4 | 585 | 116679 | 1.7 | 715 | 19222 | 0.0 | 845 | 2631 | 0.0 | 975 | 1986 | 0.0 |
| 460 | 9916 | 5.8 | 590 | 123752 | 1.2 | 720 | 17310 | 0.0 | 850 | 2079 | 0.0 | 980 | 2540 | 0.0 |
| 465 | 7051 | 4.6 | 595 | 129324 | 0.8 | 725 | 15280 | 0.0 | 855 | 2309 | 0.0 | 985 | 1139 | 0.0 |
| 470 | 5227 | 3.7 | 600 | 134082 | 0.6 | 730 | 13282 | 0.0 | 860 | 2528 | 0.0 | 990 | 2018 | 0.0 |
| 475 | 4257 | 3.3 | 605 | 135698 | 0.4 | 735 | 11753 | 0.0 | 865 | 2121 | 0.0 | 995 | 3445 | 0.0 |
| 480 | 4052 | 3.3 | 610 | 135144 | 0.2 | 740 | 10654 | 0.0 | 870 | 2751 | 0.0 | 1000 | 3704 | 0.0 |
| 485 | 4298 | 3.5 | 615 | 134180 | 0.2 | 745 | 9451 | 0.0 | 875 | 2317 | 0.0 | | | |

REPORT NUMBER: SP1-1908-441-10-R4

Melanopic Flux vs. Wavelength



Melanopic Lumens: 1470.8 M/P: 0.27

| λ (nm) | Power (µW/nm) | Lumens (φ/nm) | λ (nm) | Power (µW/nm) | Lumens (φ/nm) | λ (nm) | Power (µW/nm) | Lumens (φ/nm) | λ (nm) | Power (µW/nm) | Lumens (φ/nm) | λ (nm) | Power (µW/nm) | Lumens (φ/nm) |
|--------|---------------|---------------|--------|---------------|---------------|--------|---------------|---------------|--------|---------------|---------------|--------|---------------|---------------|
| 360 | 1768 | 0.0 | 490 | 5206 | 8.0 | 620 | 130919 | 1.6 | 750 | 8553 | 0.0 | 880 | 2713 | 0.0 |
| 365 | 1569 | 0.0 | 495 | 7286 | 11.8 | 625 | 125335 | 1.1 | 755 | 7696 | 0.0 | 885 | 2316 | 0.0 |
| 370 | 1594 | 0.0 | 500 | 10654 | 17.8 | 630 | 118388 | 0.7 | 760 | 6978 | 0.0 | 890 | 2539 | 0.0 |
| 375 | 1744 | 0.0 | 505 | 15189 | 25.8 | 635 | 111855 | 0.4 | 765 | 6377 | 0.0 | 895 | 1933 | 0.0 |
| 380 | 1659 | 0.0 | 510 | 20541 | 34.8 | 640 | 104062 | 0.3 | 770 | 5600 | 0.0 | 900 | 2216 | 0.0 |
| 385 | 1504 | 0.0 | 515 | 26492 | 43.9 | 645 | 96365 | 0.2 | 775 | 5000 | 0.0 | 905 | 2067 | 0.0 |
| 390 | 1541 | 0.0 | 520 | 32294 | 51.3 | 650 | 88651 | 0.1 | 780 | 4709 | 0.0 | 910 | 1959 | 0.0 |
| 395 | 1355 | 0.0 | 525 | 38123 | 57.0 | 655 | 81152 | 0.1 | 785 | 4305 | 0.0 | 915 | 1874 | 0.0 |
| 400 | 1243 | 0.0 | 530 | 43232 | 59.6 | 660 | 73523 | 0.0 | 790 | 4040 | 0.0 | 920 | 1484 | 0.0 |
| 405 | 1417 | 0.0 | 535 | 48012 | 59.8 | 665 | 66123 | 0.0 | 795 | 3642 | 0.0 | 925 | 1914 | 0.0 |
| 410 | 2147 | 0.1 | 540 | 52623 | 58.1 | 670 | 58677 | 0.0 | 800 | 3594 | 0.0 | 930 | 1948 | 0.0 |
| 415 | 3837 | 0.4 | 545 | 57516 | 55.1 | 675 | 52349 | 0.0 | 805 | 3190 | 0.0 | 935 | 2079 | 0.0 |
| 420 | 7159 | 1.2 | 550 | 62613 | 51.2 | 680 | 46159 | 0.0 | 810 | 3241 | 0.0 | 940 | 2263 | 0.0 |
| 425 | 12599 | 3.1 | 555 | 68554 | 46.9 | 685 | 40525 | 0.0 | 815 | 2732 | 0.0 | 945 | 1688 | 0.0 |
| 430 | 19019 | 6.5 | 560 | 75325 | 42.1 | 690 | 35615 | 0.0 | 820 | 2612 | 0.0 | 950 | 1560 | 0.0 |
| 435 | 24875 | 11.1 | 565 | 82533 | 37.0 | 695 | 31158 | 0.0 | 825 | 2966 | 0.0 | 955 | 2826 | 0.0 |
| 440 | 29103 | 16.3 | 570 | 90909 | 32.1 | 700 | 27409 | 0.0 | 830 | 2574 | 0.0 | 960 | 1477 | 0.0 |
| 445 | 29901 | 20.0 | 575 | 99621 | 27.1 | 705 | 24204 | 0.0 | 835 | 2633 | 0.0 | 965 | 1568 | 0.0 |
| 450 | 24862 | 19.3 | 580 | 108484 | 22.4 | 710 | 21558 | 0.0 | 840 | 2526 | 0.0 | 970 | 2030 | 0.0 |
| 455 | 15942 | 13.9 | 585 | 116679 | 17.8 | 715 | 19222 | 0.0 | 845 | 2631 | 0.0 | 975 | 1986 | 0.0 |
| 460 | 9916 | 9.6 | 590 | 123752 | 13.8 | 720 | 17310 | 0.0 | 850 | 2079 | 0.0 | 980 | 2540 | 0.0 |
| 465 | 7051 | 7.4 | 595 | 129324 | 10.3 | 725 | 15280 | 0.0 | 855 | 2309 | 0.0 | 985 | 1139 | 0.0 |
| 470 | 5227 | 6.0 | 600 | 134082 | 7.6 | 730 | 13282 | 0.0 | 860 | 2528 | 0.0 | 990 | 2018 | 0.0 |
| 475 | 4257 | 5.3 | 605 | 135698 | 5.3 | 735 | 11753 | 0.0 | 865 | 2121 | 0.0 | 995 | 3445 | 0.0 |
| 480 | 4052 | 5.5 | 610 | 135144 | 3.7 | 740 | 10654 | 0.0 | 870 | 2751 | 0.0 | 1000 | 3704 | 0.0 |
| 485 | 4298 | 6.2 | 615 | 134180 | 2.5 | 745 | 9451 | 0.0 | 875 | 2317 | 0.0 | | | |

REPORT NUMBER: SP1-1908-441-10-R4

TM-30-18

Summary

$R_f = 69.8$
 $R_g = 99.2$
 CIE $R_a = 72.0$
 $R_9 = -17.4$



Color Vector Graphics



REPORT NUMBER: SP1-1908-441-10-R4

TM-30-18

Individual Sample Fidelity Index ($R_{f,i}$)

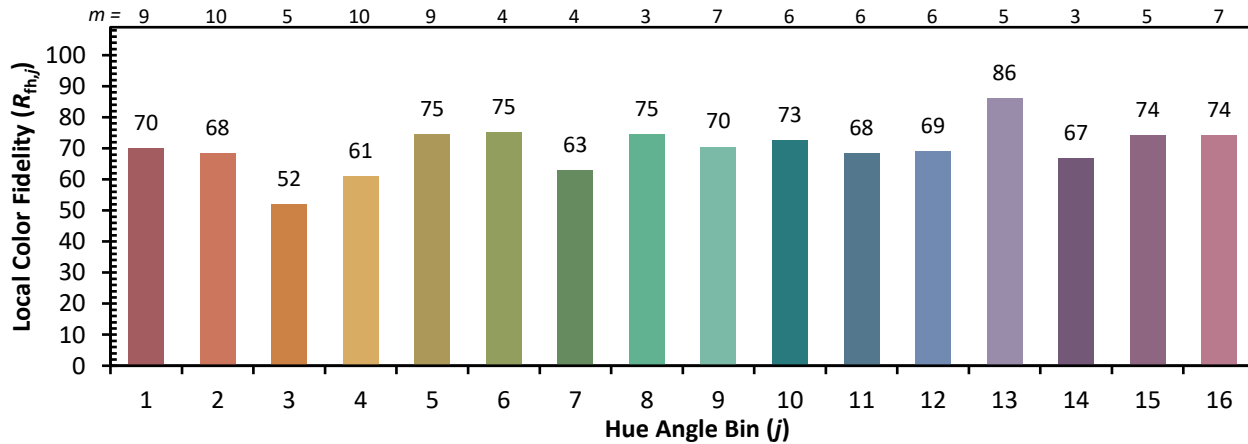
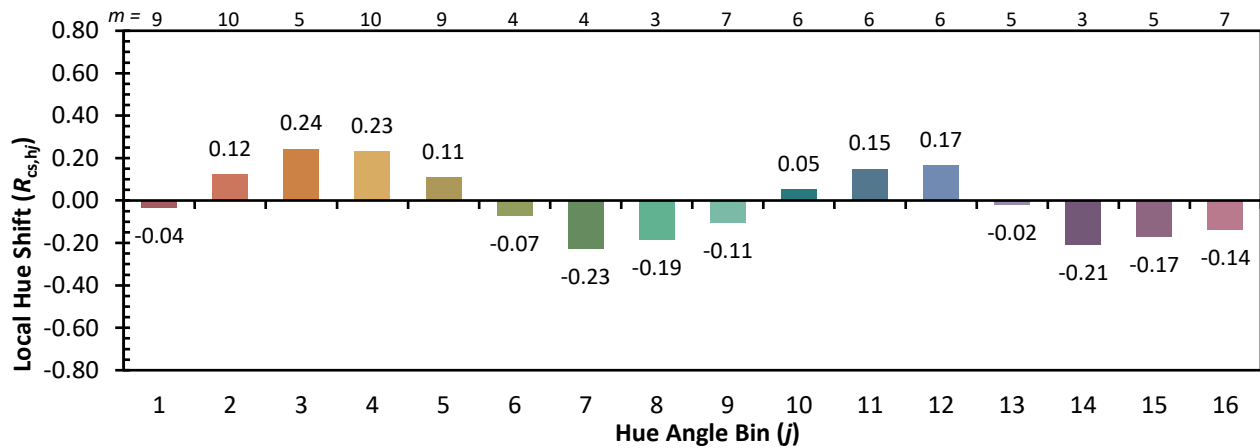
| | | | |
|------------|------------|------------|------------|
| CES01 = 87 | CES26 = 56 | CES51 = 74 | CES76 = 56 |
| CES02 = 65 | CES27 = 76 | CES52 = 76 | CES77 = 81 |
| CES03 = 32 | CES28 = 83 | CES53 = 65 | CES78 = 63 |
| CES04 = 72 | CES29 = 46 | CES54 = 78 | CES79 = 84 |
| CES05 = 52 | CES30 = 48 | CES55 = 75 | CES80 = 84 |
| CES06 = 52 | CES31 = 51 | CES56 = 65 | CES81 = 63 |
| CES07 = 44 | CES32 = 51 | CES57 = 62 | CES82 = 92 |
| CES08 = 42 | CES33 = 53 | CES58 = 66 | CES83 = 83 |
| CES09 = 29 | CES34 = 70 | CES59 = 84 | CES84 = 92 |
| CES10 = 78 | CES35 = 85 | CES60 = 90 | CES85 = 81 |
| CES11 = 61 | CES36 = 78 | CES61 = 84 | CES86 = 56 |
| CES12 = 68 | CES37 = 80 | CES62 = 70 | CES87 = 78 |
| CES13 = 45 | CES38 = 53 | CES63 = 68 | CES88 = 72 |
| CES14 = 75 | CES39 = 90 | CES64 = 69 | CES89 = 62 |
| CES15 = 72 | CES40 = 84 | CES65 = 67 | CES90 = 67 |
| CES16 = 49 | CES41 = 75 | CES66 = 64 | CES91 = 90 |
| CES17 = 51 | CES42 = 79 | CES67 = 63 | CES92 = 67 |
| CES18 = 57 | CES43 = 64 | CES68 = 69 | CES93 = 79 |
| CES19 = 74 | CES44 = 98 | CES69 = 80 | CES94 = 52 |
| CES20 = 68 | CES45 = 73 | CES70 = 63 | CES95 = 76 |
| CES21 = 89 | CES46 = 67 | CES71 = 63 | CES96 = 78 |
| CES22 = 81 | CES47 = 60 | CES72 = 87 | CES97 = 77 |
| CES23 = 92 | CES48 = 48 | CES73 = 56 | CES98 = 71 |
| CES24 = 92 | CES49 = 64 | CES74 = 87 | CES99 = 65 |
| CES25 = 74 | CES50 = 74 | CES75 = 66 | |



REPORT NUMBER: SP1-1908-441-10-R4

TM-30-18

Color Rendition by Hue-Angle Bin



REPORT NUMBER: SP1-1908-441-10-R4

TM-30-18

Measure Comparisons



(END OF REPORT)